

ModifiedVettes.com

C6 Extended Paddle Shifter Install

We are not responsible / liable for any damage, injury, and, or any other liabilities caused by improper use or installation of this product.

All installs should be completed by a certified professional.

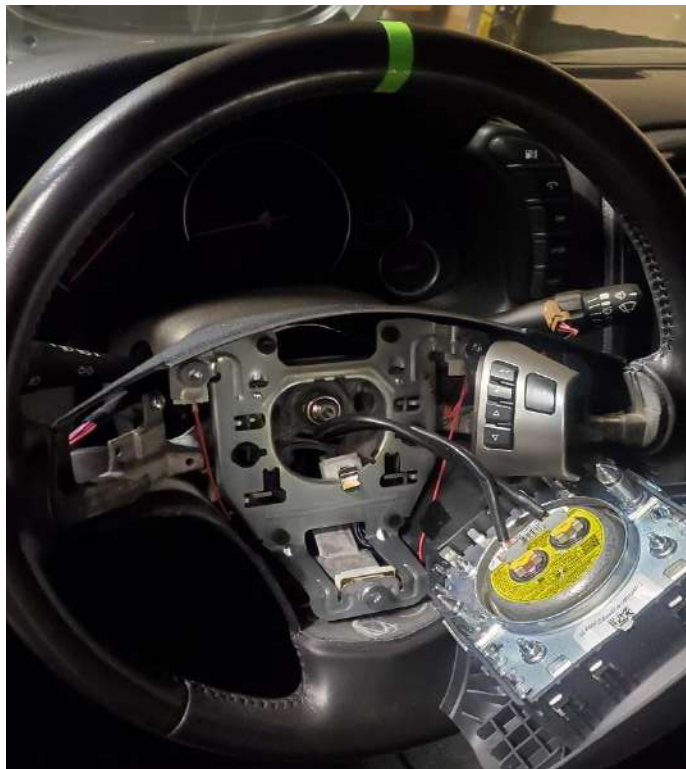
Step 1.

Disconnect the negative battery cable and pull the SIR (Supplemental Inflatable Restraint) fuse. Let the car sit for a few minutes to drain any residual power. You can tap the brake pedal a couple of times to ensure power is gone.

Step 2.

Locate the two, small, circular holes on each side of the steering wheel. Use an allen wrench and press into each hole. You will feel a spring loaded tab. Once the tabs are depressed, the airbag will pull straight out with little force.

Rest the airbag on the steering wheel. It helps to have the wheel turned upside down to hold it there.



Step 3.

Remove the steering wheel covers on each side of the wheel. There is 1 torx screw for each side trim piece.

Step 4.

Remove the 2 torx screws (one on each side) behind the trim piece that hold the Shifter Module in place.

Step 5.

Disconnect the shifter module from its power wire and remove from the steering wheel.

Optional F1 Mod Step:

Now is when you want to do the F1 shift mod to the right paddle. This achieves a downshift with the left paddle pull and an upshift with the right paddle pull.

To do the F1 mod- You flip the wires on the harness for the right paddle to plug into the shifter module. The bottom wire will be depinned and go to the top slot, the top wire be depinned and inserted into the bottom slot. There are some great writeups on CorvetteForum.com for this mod.

Step 6.

Remove the cover of the shifter module by removing the 2 phillips screws that hold it in place.



Step 7.

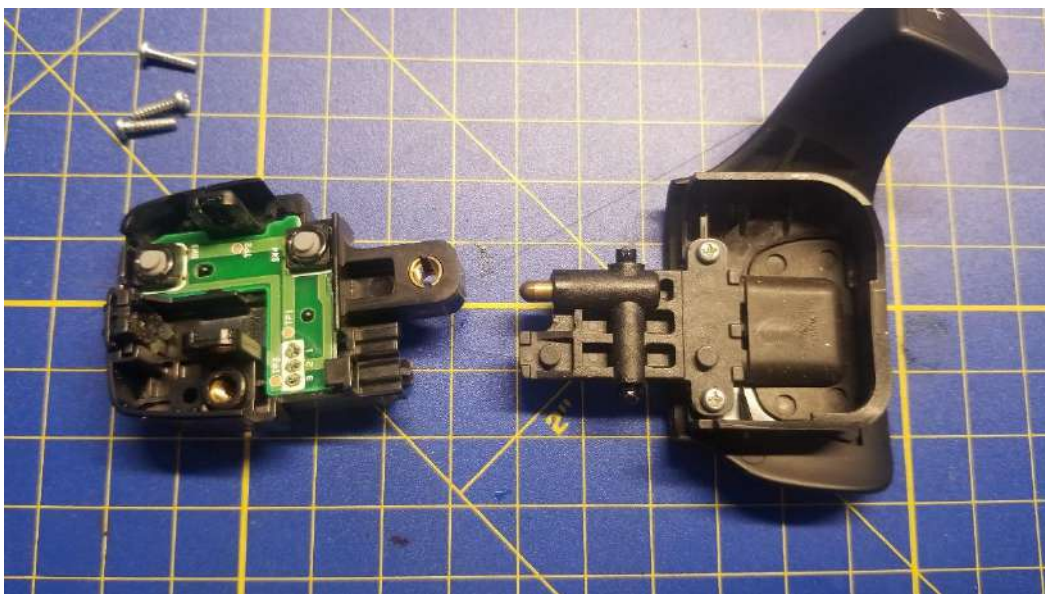
Take a small flathead screwdriver and pop up the shifter pivot arm retaining clip. It will come out completely. Now using the flathead, CAREFULLY remove the pivot arm by prying it out and away from the two retaining sockets the arm pivots in. Do not break this housing or piece.

Note- Take your time and be careful not to lose the retaining clip, the spring-loaded brass piece is loose and can fall out as well. Ensure you do not damage the housing.



Step 8.

Remove the 2 screws holding the pivot arm to the paddle shifter lever. Once removed, the pivot arm will slide out.



Step 9.

Install the OEM pivot arm onto the new ModifiedVettes.com paddle assembly reusing the 2 OEM screws from the original paddle shifter lever.



Step 10.

Reinstall the pivot arm retainer HALF WAY. Do not fully press into place yet.

Step 11. Install the pivot arm back into the shifter module housing. It will snap into place. It helps to push in the brass pin to help fitment. Once installed, press the pivot arm retainer in the rest of the way.



Step 12.

Reinstall the shifter module cover using the two phillips screws.

Step 13.

Plug the shifter module into the harness you originally disconnected from the steering wheel.

Step 14.

Screw the shifter module back into the steering wheel, using the torx screw.

Step 15.

Reinstall the steering wheel trim.

Step 16.

Reinstall the Airbag by pressing straight in. It will snap into place and lock on both sides.

Step 17.

Reconnect your SIR fuse and negative battery terminal.

DONE! Your new paddles are installed and ready to use!



We are not responsible / liable for any damage, injury, and, or any other liabilities caused by improper use or installation of this product.

All installs should be completed by a certified professional.